



# E-LINE WSB

Wall Type Modular Socket Boxes



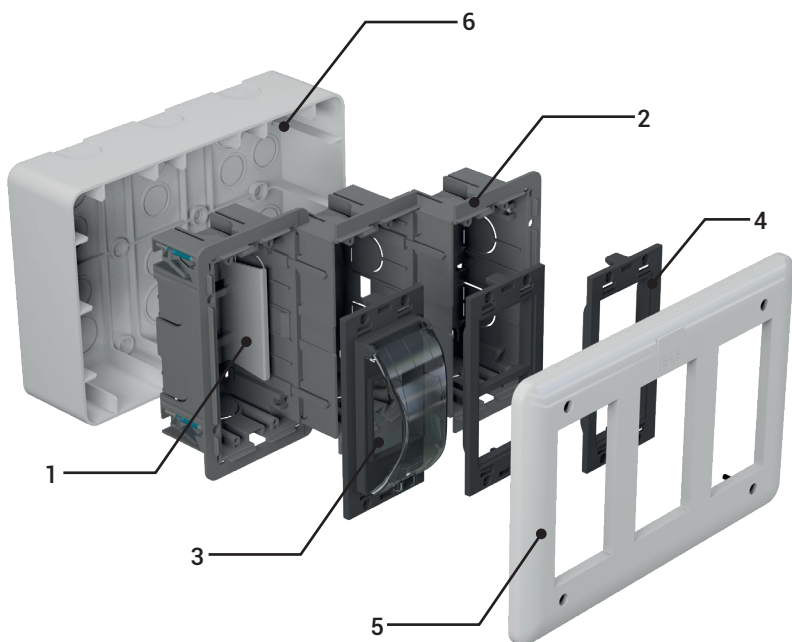
# E-LINE WSB

## ▶▶ WALL TYPE MODULAR SOCKET BOXES



### ▶AESTHETICS and FUNCTIONAL STRUCTURE WITH SAFETY, RIGHT BESIDE YOU...

- Capacity options from 4 Modules to 16 Modules,
- Modular, interlaced socket and MCB/RCD cases,
- Transparent cover for MCB/RCD,
- Ergonomic, easy to mount structure, suitable for modular 45x45 mm mains and UPS sockets and 22,5x45 mm phone, data and multimedia sockets,
- Options for flush and surface mounted application.



1. DIN rail case for MCB/RCD (PA6)
2. Modular, integrated socket case (PA6)
3. MCB/RCD plate with transparent cover (PA6+PC)
4. Modular socket plate (PA6)
5. Modular socket box, front cover (ABS)
6. Surface mounted mounting box (ABS)

- S/A back box is not required for flush mounted applications for dry walls.
- For flush mounted applications in brick and concrete wall, S/A wall case back box must be used.

### ▶E-LINE WSB-SU (Wall Type Surface Mounted Modular Socket Boxes)



- Surface Mounted (S/U)
- 16 Modules

- Surface Mounted (S/U)
- 12 Modules

- Surface Mounted (S/U)
- 8 Modules

- Surface Mounted (S/U)
- 4 Modules

# E-LINE WSB

## ▶▶ WALL TYPE MODULAR SOCKET BOXES



### ▶ E-LINE WSB-SA (Wall Type Flush Mounted Modular Socket Boxes)



- Flush Mounted (S/A)
- 16 Modules

- Flush Mounted (S/A)
- 12 Modules

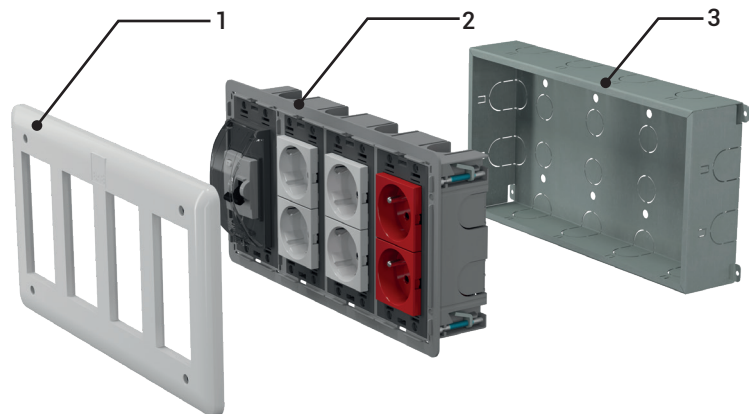
- Flush Mounted (S/A)
- 8 Modules

- Flush Mounted (S/A)
- 4 Modules

### ▶ E-LINE WSB-SA (Back Boxes)

#### Flush Mounted Application

To use in brick or concrete wall use a suitable S/A back box.



1. Front Cover
2. S/A Modular Socket Box
3. S/A Back Box (Stainless Steel)

■ For WSB Wall Type Modular Socket Boxes; MCB / RCD, power sockets (Mains, UPS), data/phone sockets & faceplates and multimedia sockets are not included.

■ Please order required sockets from the back page.

■ For more detailed information please contact us.

# E-LINE WSB

## ►► GENERAL PRODUCT SPECIFICATIONS / ORDER CODES

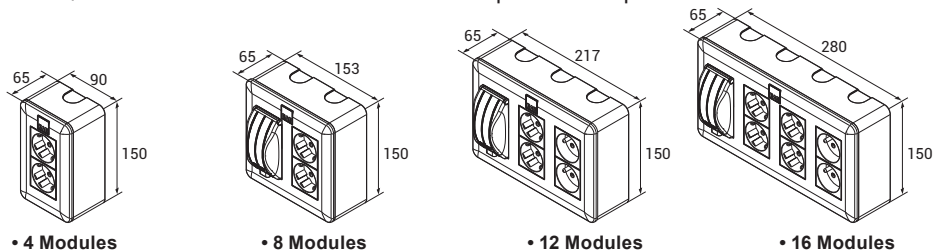


### ► E-LINE WSB-SU (Wall Type Surface Mounted Modular Socket Boxes)

Description	Order Codes	Order Codes with MCB/RCD Case
WSB Wall Type S/U Modular Single Socket Box, 4 Modules	3137950	3137954
WSB Wall Type S/U Modular Double Socket Box, 8 Modules	3137951	3137955
WSB Wall Type S/U Modular Triple Socket Box, 12 Modules	3137952	3137956
WSB Wall Type S/U Modular Quad Socket Box, 16 Modules	3137953	3137957



■ MCB/RCD module comes with DIN rail and transparent cover plate and includes 4 modules.



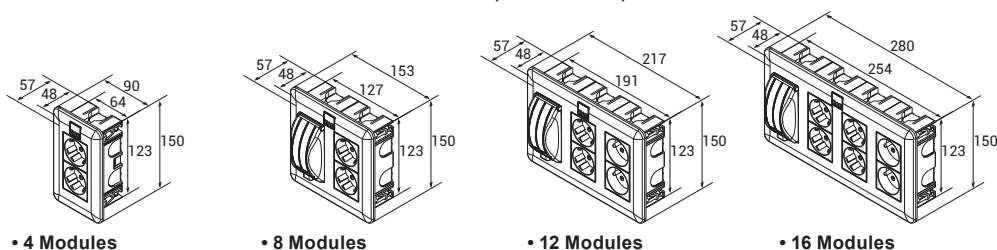
■ The products with MCB/RCD have a depth 89mm.

### ► E-LINE WSB-SA (Wall Type Flush Mounted Modular Socket Boxes)

Description	Order Codes	Order Codes with MCB/RCD Case
WSB Wall Type S/A Modular Single Socket Box, 4 Modules	3137940	3137946
WSB Wall Type S/A Modular Double Socket Box, 8 Modules	3137942	3137947
WSB Wall Type S/A Modular Triple Socket Box, 12 Modules	3137944	3137948
WSB Wall Type S/A Modular Quad Socket Box, 16 Modules	3137945	3137949



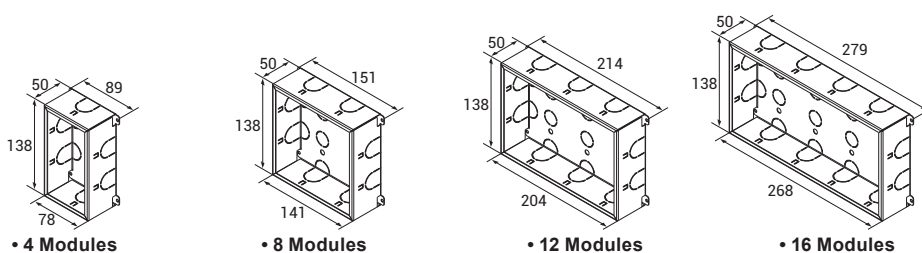
■ MCB/RCD module comes with DIN rail and transparent cover plate and includes 4 modules.



■ The products with MCB/RCD have a depth 89mm.

### ► E-LINE WSB-SA (Back Boxes)

Description	Order Codes
WSB S/A Single Back Box, 4 Modules	2067652
WSB S/A Double Back Box, 8 Modules	2067654
WSB S/A Triple Back Box, 12 Modules	2067655
WSB S/A Quad Back Box, 16 Modules	2067656





### Power Socket (1)

Description	Order Code
Power Socket (1)-(230 V/16 A)	2168604



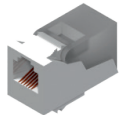
### UPS Socket (1)

Description	Order Code
UPS Socket (1)-(230 V/16 A)	2166333



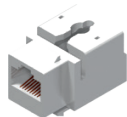
### Telephone / Data Cover (Face Plate)

Description	Order Code
Telephone/Data Cover with Spring-loaded Window, White	1004186
Telephone/Data Cover with Spring-loaded Window, Black	1053855



### Telephone Socket

Description	Order Code
Telephone Socket, White (RJ11)	1004337
Telephone Socket, Black (RJ11)	1053870



### Data Socket

Description	Order Code
Data Socket, White (RJ45)	1004334
Data Socket, Black(RJ45)	1053869



### Single Cover Plate

Description	Order Code
Single Cover Plate (1 Module)	1004246



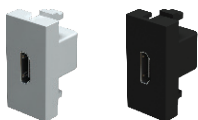
### Double Cover Plate

Description	Order Code
Double Cover Plate (2 Modules)	1002612



### USB Charging Unit

Description	Order Code
USB Charge Adapter, 2 Ports, Entry 100-240V AC, 50-60Hz, Output 5V DC - 2100mA	1016316



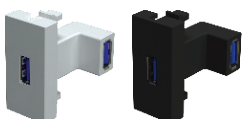
### HDMI Adapter

Description	Order Code
HDMI Adapter, 22.5x45mm, Female-Female, 90° Angled, White	1016317
HDMI Adapter, 22.5x45mm, Female-Female, 90° Angled, Black	1053871



### VGA Adapter

Description	Order Code
VGA Adapter, 22.5x45mm, Female-Female, White	1016319
VGA Adapter, 22.5x45mm, Female-Female, Black	1053876



### USB Adapter

Description	Order Code
USB 3.0 Adapter, 22.5x45mm, Female-Female, 90° Angled, White	1016318
USB 3.0 Adapter, 22.5x45mm, Female-Female, 90° Angled, Black	1053875

EAE Elektrik A.S.  
Head Office  
Akcaburgaz Mahallesi,  
3114. Sokak, No:10 34522  
Esenyurt - Istanbul - TURKEY  
Tel: +90 (212) 866 20 00  
Fax: +90 (212) 886 24 20

EAE DL 3 Factory  
Busbar  
Gebze IV Istanbul Makine ve Sanayicileri  
Organize Bolgesi, 6. Cadde,  
No: 6 41455 Demirciler Koyu,  
Dilovası - Kocaeli - TURKEY  
Tel: +90 (262) 999 05 55  
Fax: +90 (262) 502 05 69

Please visit our website for the updated version of our catalogs.  
[www.eaelectric.com](http://www.eaelectric.com)



Brochure 33-En. / Rev.01 0 pcs. 25/04/2024  
S.S.

EAE has full right to make any revisions or changes on this brochure without any prior notice.

