



E-LINE SMART

Equipped Desk Socket Blocks—Safe, Reliable, Efficient Solutions



E-LINESMART

Please visit our website for the updated version of our catalogues.
www.eaeelectric.com



CONTENTS

►► E-LINE SMART

E-Line Smart STD-I Standard Free Type.....	8-9
E-Line Smart STD-II Standard Stand Fixed Type.....	10-11
SM-STD I - SM-STD II / Free-standing and Stand Fixed Type Technical Specifications and Order Codes.....	12
E-Line Smart SM DEC-I Standard Free Tip / SM DEC-II Standard Stand Foot Type.....	13-16
SM DEC-I Free Tip / SM DEC-II Stand Fixed Type Technical Specifications and Order Codes.....	17
E-Line Smart LUX-I Luxury Free Type.....	18-19
E-Line Smart LUX-II Luxury Stand Fixed Type.....	20-21
LUX-I Luxury Free Tip / LUX-II Luxury Stand Fixed Type Technical Specifications and Order Codes.....	22
E-Line Smart IN-I Recessed Rectangular Type.....	23-24
E-Line Smart IN-I Recessed Rectangular Type Technical Specifications and Order Codes.....	25
E-Line Smart SM DEC-6 / SM DEC-7 Cylindrical Column Type.....	26-27
E-Line Smart SM DEC-6 / SM DEC-7 Technical Specifications and Order Codes.....	28
Standard Empty Products Table.....	29
Hardware Table for Standard Products / Table Connection Elements.....	30
E-Line Smart SM-FLEX Backbone Channel (Cable Collection System).....	31
E-Line Smart Dual USB Charger / Surge Protection Device Outlet Modules.....	32
Socket Modules.....	33-34
General Product Structure and Features.....	35
Declaration.....	36
Certificate.....	37-38

E-LINE SMART

►► HIGH-PERFORMANCE and AESTHETIC SOLUTIONS





► **ELEGANT and PRACTICAL SOLUTIONS FOR BUSINESS CENTRES, OFFICES and WORKSPACES.**

Fully equipped, ready-to-use products with power (grid/UPS), data, telephone, and multimedia sockets for desk work, meetings and presentations.

- Ergonomic and flexible design that can be equipped with modular type power, low current and multimedia sockets according to your personal needs and preferences.

► **ANODIZED ALUMINIUM BODY**

- Anodized, smoke and black color options.
- Rich visual and functional options according to your personal needs and preferences.

E-LINE SMART

►► TECHNOLOGY and ART COMPATIBLE SOLUTIONS





► **INNOVATIVE, AESTHETIC and ARTISTIC**

- Can be embedded into desks or work surfaces. Rich options for cable entry and termination.
- Product variety provided with aesthetically inconspicuous mounting legs.

► **TECHNOLOGICAL and SECURE**

- All plastic components in our products are made of PC/ABS raw material, halogen-free, and meet V2 flammability class according to the UL94 standard.



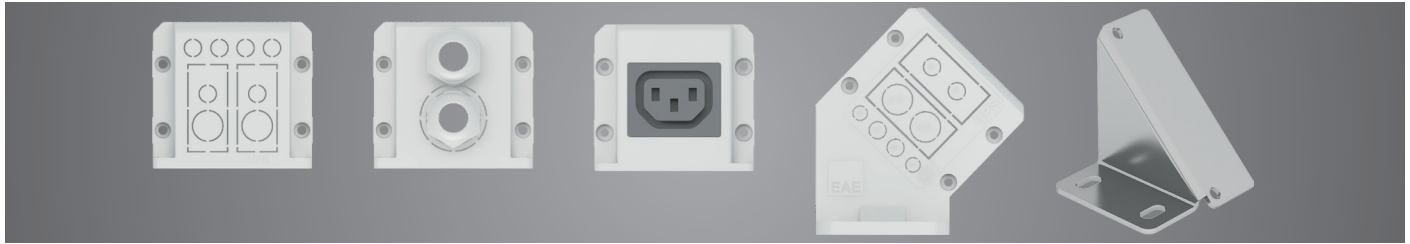
E-LINE SMART SM-STD I

STANDARD FREE TYPE



- It can be securely fixed with screws when needed in rectangular prism structure for desk usage or wall-mounted surface applications. It is a socket block that can be equipped with power, UPS, RJ45, RJ11 sockets; HDMI and USB charging output accessories.
- According to customer demand, it can be equipped with a minimum of 4 modules and a maximum of 18 modules.
- For product requests equipped with socket options other than standard products, you can select the power, low current and multimedia sockets you desire from the "Socket Modules" page.

CABLE ENTRY COVERS :



- | | | | | |
|---|--|-----------------------------|---|--------------------------|
| (1) | (2) | (3) | (4) | (5) |
| Blast Type
Ø7 Hole (6 Pieces)
Ø12 Hole (2 Pieces) | Double Coupler Type
M16x1,5 Coupler
(2 Pieces) | Pc Side Cover
(1 Pieces) | Angled Pass-through
Terminal Block
Screwless Type
Ø7 Hole (4 Pieces) | Angled Desk
Connector |

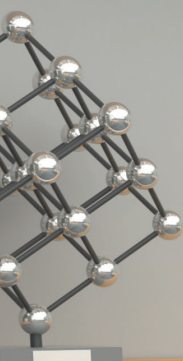
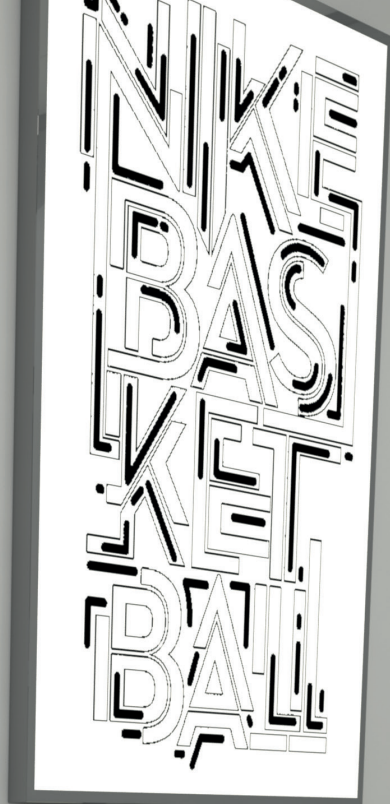
- The cover type (1) is used as standard in the SM-STD I product.
- The cover type (4) is used as standard in the SM-STD II product.
- For cover types (2), (3), and (5) models, please contact our company.



- E-Line Smart STD I equipped with MCB and/or RCBO.

Color Options:



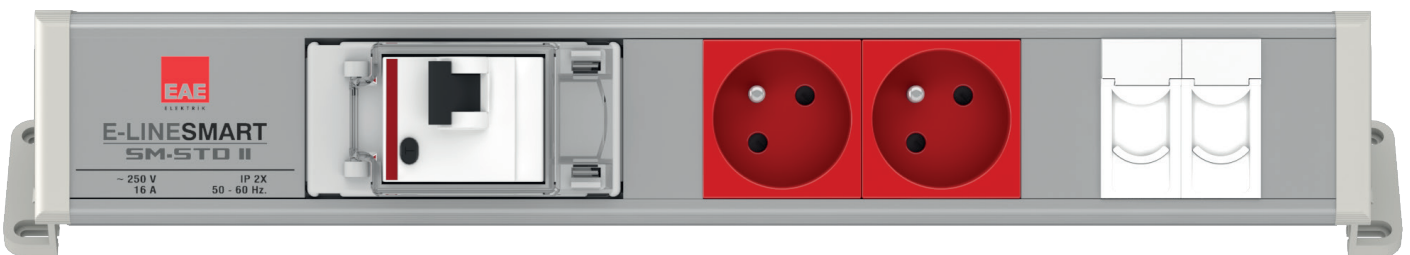


E-LINE SMART

▶▶STANDARD FREE TYPE



- It can be securely fixed with screws when needed in rectangular prism structure for desk usage or wall-mounted surface applications. It is a socket block that can be equipped with power, UPS, RJ45, RJ11 sockets; HDMI and USB charging output accessories.
- According to customer demand, it can be equipped with a minimum of 4 modules and a maximum of 18 modules.
- For product requests equipped with socket options other than standard products, you can select the power, low current, and multimedia sockets you desire from the "Socket Modules" page.



■E-Line Smart STD II equipped with MCB and/or RCBO.

Color Options:



E-LINE SMART

►► TECHNICAL SPECIFICATIONS and ORDER CODES

► E-Line Smart SM-STD I Free Type / Smart-STD II Fixed Type



Product Description and Visual		Serial Number	Capacity (Module)	Power Outlets			Active Network Products					Passive Network Products				Color	Order Code	Order Code
SM-STD I Free Type	SM-STD II Footed Type			Power Socket	UPS	USB charging	CAT6 UTP RJ45	CAT3 UTP RJ11	USB Adap. 22,5x45	VGA Adap. 22,5x45	Face Plate 22,5x45	Face Plate 45x45	Blind Cover 22,5x45	Blind Cover 45x45	SM-STD I Free Type		SM-STD II Footed Type	
		1	8	1	2	-	-	-	-	-	2	-	-	-	Anodized	3178185	3299405	
		2	10	2	2	-	-	-	-	-	2	-	-	-		3177541	3299406	
		3	12	2	2	-	-	-	-	-	4	-	-	-		3178188	3299407	
		4	14	3	3	-	-	-	-	-	2	-	-	-		3178189	3299408	
		5	16	2	4	-	-	-	-	-	4	-	-	-		3178190	3299409	
		6	18	3	4	-	-	-	-	-	4	-	-	-		3178191	3299410	
		1	8	1	2	-	-	-	-	-	2	-	-	-	Smoke	3290900	3299424	
		2	10	2	2	-	-	-	-	-	2	-	-	-		3290899	3299426	
		3	12	2	2	-	-	-	-	-	4	-	-	-		3290901	3299427	
		4	14	3	3	-	-	-	-	-	2	-	-	-		3290902	3299429	
		5	16	2	4	-	-	-	-	-	4	-	-	-		3290903	3299430	
		6	18	3	4	-	-	-	-	-	4	-	-	-		3290904	3299432	
		1	8	1	2	-	-	-	-	-	2	-	-	-	Black	3179245	3299411	
		2	10	2	2	-	-	-	-	-	2	-	-	-		3179246	3299412	
		3	12	2	2	-	-	-	-	-	4	-	-	-		3179247	3299413	
		4	14	3	3	-	-	-	-	-	2	-	-	-		3179248	3299421	
		5	16	2	4	-	-	-	-	-	4	-	-	-		3179249	3299422	
		6	18	3	4	-	-	-	-	-	4	-	-	-		3179250	3299423	

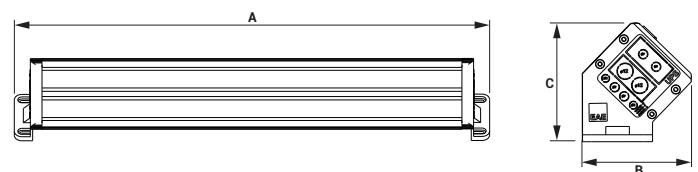
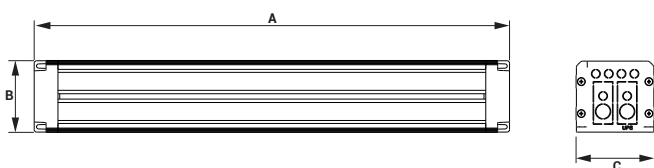
■ Not: Can be used with "angled desk connector" when necessary. For this, refer to Page 21.

► E-Line Smart SM-STD I Free Type / Smart-STD II Footed Type



SM-STD I Free Type Product Dimensions						
Product Order Code			Module	Dimensions (mm)		
Anodized	Smoke	Black		A	B	C
3178185	3290900	3179245	8	355	60	55
3177541	3290899	3179246	10	400	60	55
3178188	3290901	3179247	12	445	60	55
3178189	3290902	3179248	14	490	60	55
3178190	3290903	3179249	16	535	60	55
3178191	3290904	3179250	18	580	60	55

SM-STD II Stand Fixed Type Product Dimensions						
Product Order Code			Module	Dimensions (mm)		
Anodized	Smoke	Black		A	B	C
3299405	3299424	3299411	8	362,5	79	86
3299406	3299426	3299412	10	407,5	79	86
3299407	3299427	3299413	12	452,5	79	86
3299408	3299429	3299421	14	497,5	79	86
3299409	3299430	3299422	16	542,5	79	86
3299410	3299432	3299423	18	587,5	79	86



Body : Aluminium
Side Covers : : PC/ABS, V2 (Flammability Class), HF (Halogen Free)



E-LINE SMART SM-DEC I

▶▶DEC FREE TYPE



- It is a bureau socket block designed for aesthetic and visual emphasis for desktop usage. With its special foot design, it can be easily attached to the edge of the desk. It can be equipped with modular type and 45° angled sockets, meeting the needs of working environments.
- It features explosion-type side covers for cable entries.
- For product requests equipped with different socket options other than standard products, you can select the power, low current, and multimedia sockets you desire from the "Socket Modules" page.



Color Options:



Smoke



Gray



Black



E-LINE SMART SM-DEC II

►►DEC STAND FIXED TYPE



- It is a bureau socket block designed for aesthetic and visual emphasis for desktop usage. With its special foot design, it can be easily attached to the edge of the desk. It can be equipped with modular type and 45° angled sockets, meeting the needs of working environments.
- It features explosion-type side covers for cable entries.
- For product requests equipped with different socket options other than standard products, you can select the power, low current, and multimedia sockets you desire from the "Socket Modules" page.



Color Options:



Smoke



Gray



Black

E-LINE SMART

►► TECHNICAL SPECIFICATIONS and ORDER CODES

► E-Line Smart SM-DEC I Free Type / Smart SM-DEC II Footed Type



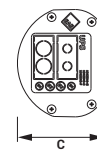
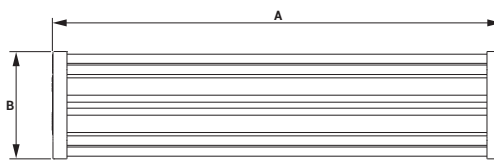
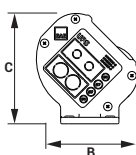
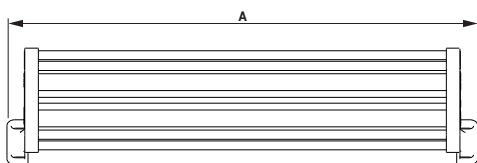
Product Description and Visual		Serial Number	Capacity (Module)	Power Outlets			Active Network Products					Passive Network Products				Color	Order Code	Order Code
SM-DEC I Free Type	SM-DEC II Footed Type			Power Socket	UPS	USB charging	CAT6 UTP RJ45	CAT3 UTP RJ11	USB Adap. 22,5x45	VGA Adap. 22,5x45	Terminal Brand	Face Plate 22,5x45	Face Plate 45x45	Blind Cover 22,5x45	Blind Cover 45x45		SM-DEC I Free Type	SM-DEC II Footed Type
		1	10	2	2	-	-	-	-	ONKA	2	-	-	-	Anodized	3303376	3303380	
		2	10	2	2	-	-	-	-	WAGO	2	-	-	-		3275458	3275461	
		1	10	2	2	-	-	-	-	ONKA	2	-	-	-	Smoke	3304363	3303381	
		2	10	2	2	-	-	-	-	WAGO	2	-	-	-		3304362	3275462	
		1	10	2	2	-	-	-	-	ONKA	2	-	-	-	Black	3303379	3303382	
		2	10	2	2	-	-	-	-	WAGO	2	-	-	-		3275460	3275463	

► E-Line Smart SM-DEC I / SM-DEC II Free Type Technical



SM-DEC I Free Type Product Dimensions						
Product Order Code			Module	Dimensions (mm)		
Anodized	Smoke	Black		A	B	C
3303376	3304363	3303379	10	408,5	78	85,5
3275458	3304362	3275460				

SM-DEC II Footed Type Product Dimensions						
Product Order Code			Module	Dimensions (mm)		
Anodized	Smoke	Black		A	B	C
3303380	3303381	3303382	10	381	80	65
3275461	3275462	3275463				



Body : Aluminium
Side Covers : PC/ABS, V2 (Flammability Class), HF (Halogen Free)



ELINE SMART SM-LUX I

►► LUXURY FREE STANDING TYPE



- It is a modular type and can be equipped with 45° angled sockets, designed with aesthetics and visual appeal in mind for desktop use, suitable for office environments, a bureau-type power strip.
- There are explosion-proof type side covers for cable entries.
- Our standard type products are manufactured with cable retaining clamps and spring terminals.
- For product requests equipped with different socket options other than standard products, you can specify the desired power, low current and multimedia sockets yourself from the 'Socket Modules' page.



Color Options:



Smoke



Gray



Black



ELINE SMART SM-LUX II

►► LUXURY STANDING TYPE



- It is a bureau-type power strip designed with aesthetics and visual appeal in mind for desktop use. With its special base design, it can be easily attached to the edge of the desk. It is equipped with modular type and 45° angled sockets, fulfilling the needs of work environments.
- There are explosive-proof type side covers for cable entries.
- Our standard type products are manufactured with cable retaining clamps and spring terminals.
- For product requests equipped with different socket options other than standard products, you can select the desired power, low current and multimedia sockets yourself from the 'Socket Modules' page.



Color Options:



Smoke



Gray



Black

E-LINE SMART

►► TECHNICAL SPECIFICATIONS and ORDER CODES

► E-Line Smart SM-LUX I Free Type / Smart SM-LUX II Footed Type

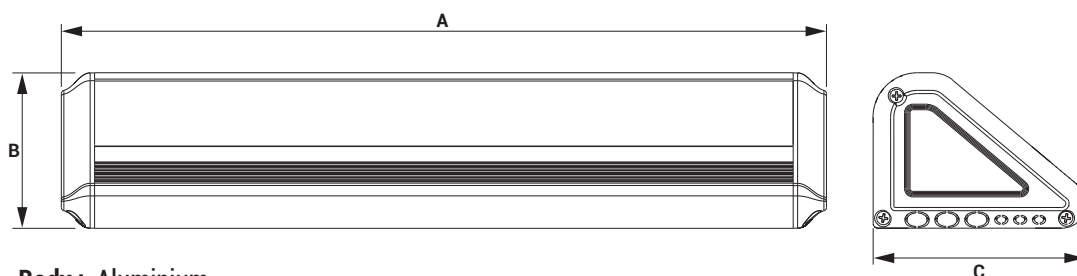


Product Description and Visual		Serial Number	Capacity (Module)	Power Outlets			Active Network Products					Passive Network Products				Color	Order Code	Order Code
SM-LUX I Free Type	SM-LUX II Footed Type			Power Socket	UPS	USB charging	CAT6 UTP RJ45	CAT3 UTP RJ11	USB Adap. 22,5x45	VGA Adap. 22,5x45	Face Plate 22,5x45	Face Plate 45x45	Blind Cover 22,5x45	Blind Cover 45x45	SM-LUX I Free Type		SM-LUX II Footed Type	
		1	8	1	2	-	-	-	-	-	2	-	-	-	Anodized	3178200	3179251	
		2	10	2	2	-	-	-	-	-	2	-	-	-		3178201	3179620	
		3	12	2	2	-	-	-	-	-	4	-	-	-		3178202	3179621	
		4	14	3	3	-	-	-	-	-	2	-	-	-		3178203	3179622	
		5	16	2	4	-	-	-	-	-	4	-	-	-		3178204	3179623	
		6	18	3	4	-	-	-	-	-	4	-	-	-		3178205	3179624	
		1	8	1	2	-	-	-	-	-	2	-	-	-	Smoke	3290712	3290717	
		2	10	2	2	-	-	-	-	-	2	-	-	-		3329820	3290718	
		3	12	2	2	-	-	-	-	-	4	-	-	-		3290713	3290719	
		4	14	3	3	-	-	-	-	-	2	-	-	-		3290714	3290720	
		5	16	2	4	-	-	-	-	-	4	-	-	-		3290715	3290721	
		6	18	3	4	-	-	-	-	-	4	-	-	-		3290716	3290722	
		1	8	1	2	-	-	-	-	-	2	-	-	-	Black	3179233	3179631	
		2	10	2	2	-	-	-	-	-	2	-	-	-		3179234	3179632	
		3	12	2	2	-	-	-	-	-	4	-	-	-		3179235	3179633	
		4	14	3	3	-	-	-	-	-	2	-	-	-		3179236	3179634	
		5	16	2	4	-	-	-	-	-	4	-	-	-		3179237	3179635	
		6	18	3	4	-	-	-	-	-	4	-	-	-		3179238	3179636	

► E-Line Smart SM-LUX I Free-standing Type Technical



SM LUX I Free Type Product Dimensions						
Product Order Code			Module	Dimensions (mm)		
Anodized	Smoke	Black		A	B	C
3178200	3290712	3179233	8	355	67,5	107
3178201	3329820	3179234	10	400	67,5	107
3178202	3290713	3179235	12	445	67,5	107
3178203	3290714	3179236	14	490	67,5	107
3178204	3290715	3179237	16	535	67,5	107
3178205	3290716	3179237	18	580	67,5	107



Body : Aluminium

Side Covers: : PC/ABS, V2 (Flammability Class), HF (Halogen Free)

■ Note: The dimensions of the SM-LUX II Floor-standing Type product are the same

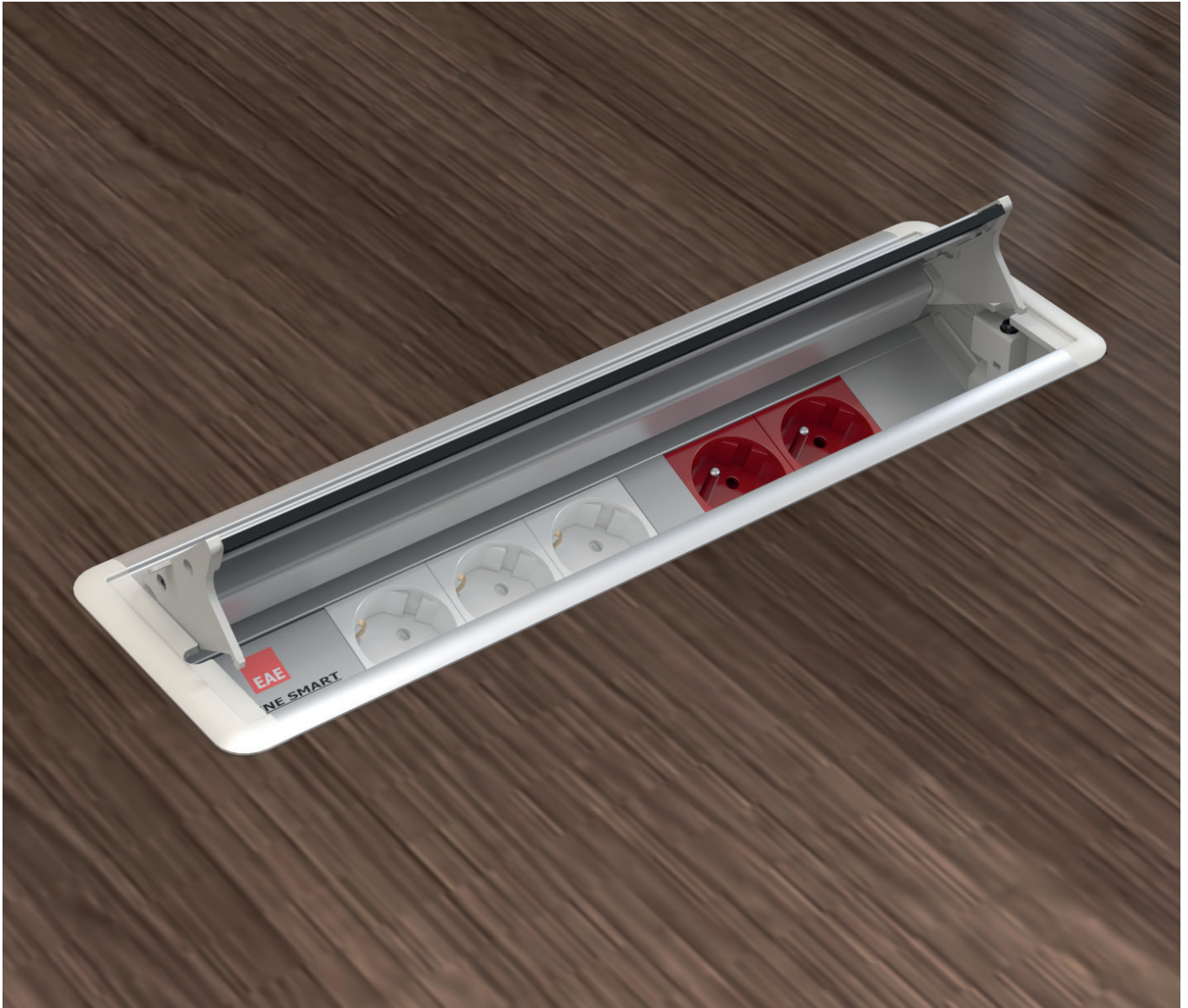


E-LINE SMART SM-IN I

▶▶ RECESSED RECTANGULAR TYPE



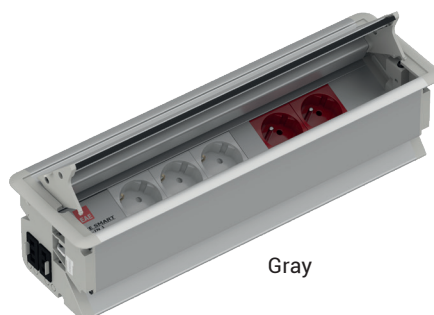
- It is an office plug block designed in a recessed rectangular section, equipped with modular and 45° angled sockets, which are necessary or requested for working environments.
- The cover opens automatically with a single touch, and thanks to its special locking mechanism and brush cover structure, it can also be used while closed.
- Our standard type products are manufactured with cable holder clamps and spring terminals.
- Thanks to specially developed self-positioning side locking clips, installation is easy.
- For product requests equipped with socket options other than standard ones, you can select the desired power, low current, and multimedia sockets yourself from the "Socket Modules" product page.



Color Options:



Smoke



Gray



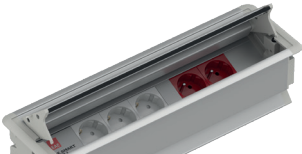
Black


E-LINE SMART


►► TECHNICAL SPECIFICATIONS and ORDER CODES E-Line

► Smart SM-IN I / Recessed Rectangular Type



Product Description and Visual	Serial Number	Capacity (Module)	Power Outlets			Active Network Products					Passive Network Products				Color	Order Code
			Power Socket	UPS	USB charging	CAT6 UTP RJ45	CAT3 UTP RJ11	USB Adap. 22,5x45	VGA Adap. 22,5x45	HDMI Adap. 22,5x5	Face Plate 22,5x45	Face Plate 45x45	Blind Cover 22,5x45	Blind Cover 45x45		
	1	8	1	2	-	-	-	-	-	-	2	-	-	-	Anodized	3177542
	2	10	2	2	-	-	-	-	-	-	2	-	-	-		3178181
	3	12	2	2	-	-	-	-	-	-	4	-	-	-		3179252
	4	14	3	3	-	-	-	-	-	-	2	-	-	-		3179253

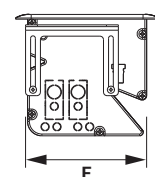
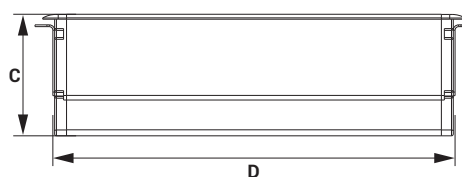
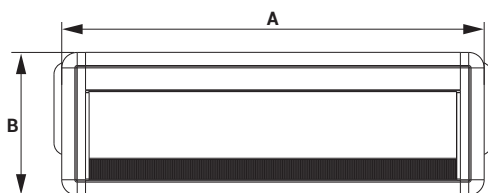
	1	8	1	2	-	-	-	-	-	-	2	-	-	-	Smoke	3329822
	2	10	2	2	-	-	-	-	-	-	2	-	-	-		3256326
	3	12	2	2	-	-	-	-	-	-	4	-	-	-		3256327
	4	14	3	3	-	-	-	-	-	-	2	-	-	-		3256329

	1	8	1	2	-	-	-	-	-	-	2	-	-	-	Black	3179262
	2	10	2	2	-	-	-	-	-	-	2	-	-	-		3178183
	3	12	2	2	-	-	-	-	-	-	4	-	-	-		3179263
	4	14	3	3	-	-	-	-	-	-	2	-	-	-		3179264

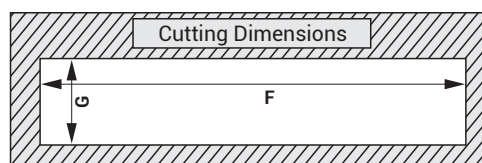
► E-Line Smart SM-IN I / Recessed Rectangular Type Technical



SM IN I Recessed Rectangular Type Product Dimensions											
Product Order Code			Module	Dimensions (mm)					Cutting Dimension		
Anodized	Smoke	Black		A	B	C	D	E	F	G	
3177542	3329822	3179262	8/14	357,5	120	102	337,5	97	340	102	
3178181	3256326	3178183	10/16	402,5	120	102	382,5	97	385	102	
3179252	3256327	3179263	12/18	447,5	120	102	427,5	97	430	102	
3179253	3256329	3179264	14/20	492,5	120	102	472,5	97	475	102	



Body : Aluminium
Side Covers : PC/ABS, V2 (Flammability Class), HF (Halogen Free)





E-LINE SMART SM-DEC 6 / SM-DEC 7

►►CYLINDRICAL COLUMN TYPE

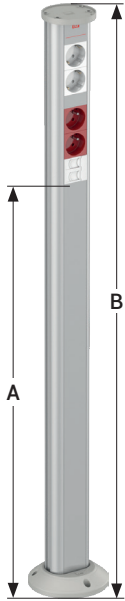


- It is an office plug block in cylindrical form, capable of carrying all types of power, telephone, data and multimedia sockets, which can be used for lowering cables brought from suspended ceiling to desk level when strong and weak current installation cables cannot be routed through floor or wall.
- It can be fixed between the ceiling and the floor with special connection parts, or in short lengths that do not reach the ceiling, it can be fixed only on the floor and equipped with the required modular type and 45° angled sockets.
- The maximum length can be 600 cm and production is made specifically upon order according to the ceiling height.
- It can also be specially produced upon order according to the usage (desk) height for short lengths (max 120 cm) mounted on the floor.
- In products to be used between the ceiling and the floor, strong current cables inside the product are terminated in terminals in the upper section. Telephone, data and multimedia cables, on the other hand, can be routed from the upper section through suitable cable entry holes to reach the sockets.
- Standard production offers 6 different socket configurations for use.

E-LINE SMART

►► TECHNICAL SPECIFICATIONS and ORDER CODES

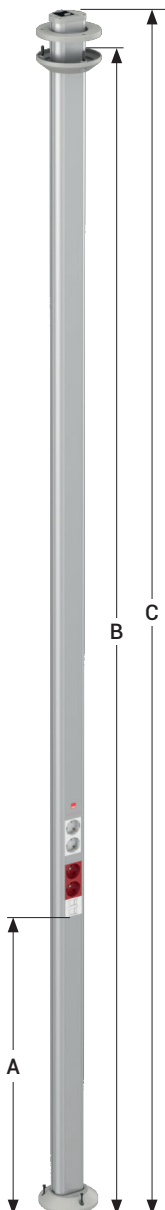
► E-Line Smart SM-DEC 6 / Mini Column Type



Standard Product Configuration Table for Mini Column Type					
No	Order Code	Model	Hardware	A (mm)	B (mm)
1	3275469	SM-DEC 6 TYPE 10 MODULE BLACK (WAGO)	2 POWER OUTLETS + 2 UPS + 2 DATA TEL FACE PLATES	750	1050
2	3275468	SM-DEC 6 TYPE 10 MODULE SMOKE (WAGO)		750	1050
3	3275467	SM-DEC 6 TYPE 10 MODULE ANODIZED (WAGO)		750	1050
4	3303385	SM-DEC 6 TYPE 10 MODULE BLACK (ONKA)		750	1050
5	3303384	SM-DEC 6 TYPE 10 MODULE SMOKE (ONKA)		750	1050
6	3303383	SM-DEC 6 TYPE 10 MODULE ANODIZED (ONKA)		750	1050

(*) Dimensions can be adjusted according to preference and need. (hmax = 120cm)

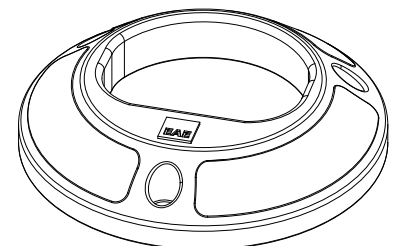
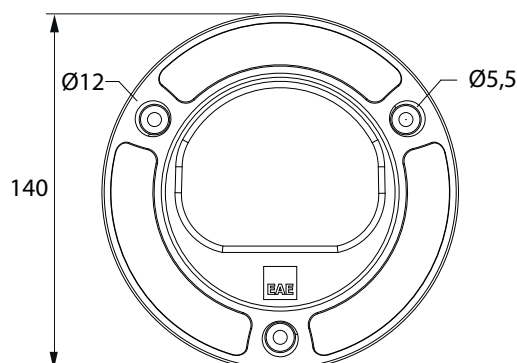
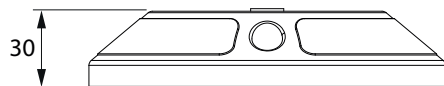
► E-Line Smart SM-DEC 7 / Column Type



Standard Product Configuration Table for Column Type						
No	Order Code	Model	Hardware	A (mm)	B (mm)	C (mm)
1	3275472	SM-DEC 7 TYPE 10 MODULE BLACK (WAGO)	2 POWER OUTLETS + 2 UPS + 2 DATA TEL FACE PLATES	750	2800	2900
2	3275471	SM-DEC 7 TYPE 10 MODULE SMOKE (WAGO)		750	2800	2900
3	3275470	SM-DEC 7 TYPE 10 MODULE ANODIZED (WAGO)		750	2800	2900
4	3303388	SM-DEC 7 TYPE 10 MODULE BLACK (ONKA)		750	2800	2900
5	3303387	SM-DEC 7 TYPE 10 MODULE SMOKE (ONKA)		750	2800	2900
6	3303386	SM-DEC 7 TYPE 10 MODULE ANODIZED (ONKA)		750	2800	2900

(*) Dimensions can be adjusted according to preference and need. (hmax = 600cm)

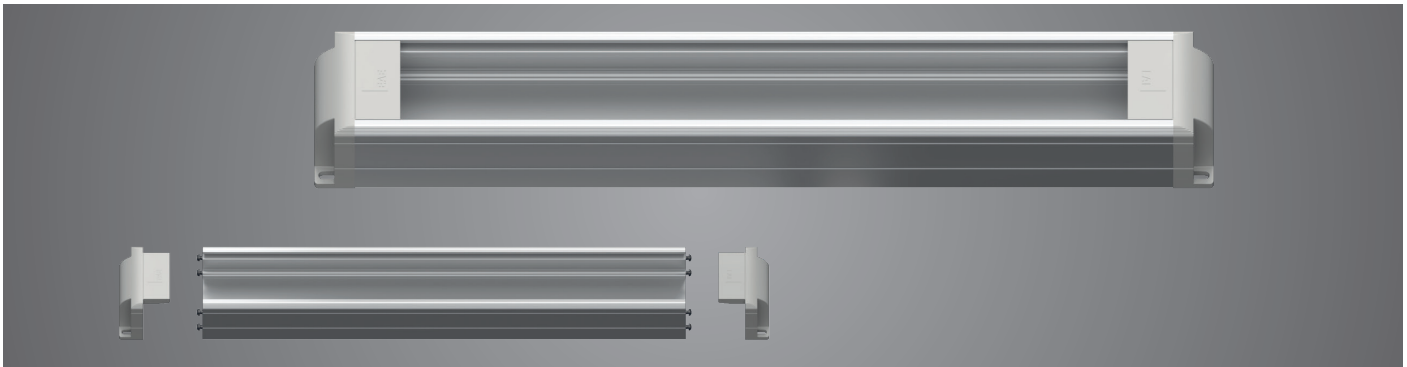
► E-Line Smart SM-MK (Mini Column) and SM-K (Column) Type Floor and Suspended Ceiling Plate



E-LINE SMART

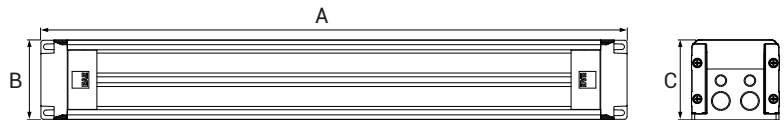
►► TECHNICAL SPECIFICATIONS and ORDER CODES

► Standard Empty Product Table



Explanation

1. Assembled in 8 different sizes ranging from 6 modules to 20 modules, empty, as standard. You can also wire it yourself with the necessary number and type of socket assembly according to your needs.
2. The product is manufactured and sold as an unassembled empty case. As socket assembly and wiring, as well as electrical testing, are not conducted by us, our company will not be responsible for any malfunction in case of such issues.
3. "Halogen free" feature PC/ABS side panels, suitable for the body structure and equipped with knock-out holes for cable entries, are provided as standard with the product. Additionally, the product includes screw-type cable retaining clips inside the body and a grounding terminal mounted on the body.
4. In addition to the standard sizes listed, custom manufacturing in different sizes can be provided upon request and need. Please contact our company for further information.
5. The structure and dimensions are suitable for the assembly of modular type 45x45 mm or 22.5x45 mm mains and UPS power sockets, as well as telephone, data, USB, HDMI, and VGA multimedia sockets. However, it's important to note that the socket height and fitting details may vary and may not be compatible with all brands. Please contact our company before placing an order to discuss this matter.



► E-Line Smart SM-STD B / Standard Empty Type

Product Description and Visual	Serial Number	Capacity (Module)	Product Dimensions			Color	Order Code
			A	B	C		
	1	6	220	60	55	Anodized	3178192
	2	8	265	60	55		3178193
	3	10	310	60	55		3178194
	4	12	355	60	55		3178195
	5	14	400	60	55		3178196
	6	16	445	60	55		3178197
	7	18	490	60	55		3178198
	8	20	535	60	55		3178199
	1	6	220	60	55	Smoke	3290894
	2	8	265	60	55		3290895
	3	10	310	60	55		3290890
	4	12	355	60	55		3290896
	5	14	400	60	55		3290891
	6	16	445	60	55		3290897
	7	18	490	60	55		3290892
	8	20	535	60	55		3290893
	1	6	220	60	55	Black	3179219
	2	8	265	60	55		3179220
	3	10	310	60	55		3179221
	4	12	355	60	55		3179222
	5	14	400	60	55		3179223
	6	16	445	60	55		3179224
	7	18	490	60	55		3179225
	8	20	535	60	55		3179226

E-LINE SMART

►► TECHNICAL SPECIFICATIONS and ORDER CODES

► Hardware Table For Standard Products



Explanation

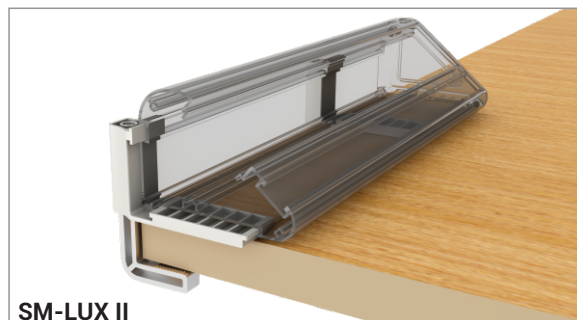
1. For different brands of power sockets, please contact our company.
2. Data (Cat-6 UTP, RJ45) and telephone (Cat-3, RJ11) sockets are not included in standard products; only the "Face Plate" for these sockets is provided.
3. For different brands of active and passive network products, please contact our company.
4. Prices include assembly, internal wiring (for power sockets) and knock-out type plastic side panels. The cable is "halogen free." Please contact our company for special sections and types.
5. Products are packaged in nylon bags and cardboard boxes.
6. In addition to the standard products listed, custom manufacturing is available upon request with any desired content and length.

► Adjustable Table Connection Leg

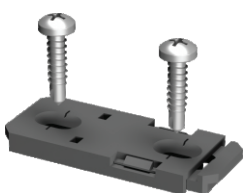


Description	Order Code
SM-LUX II Desk Connection Kit (Gray)	2086359
SM-LUX II Desk Connection Kit (Smoke)	2086360
SM-LUX II Desk Connection Kit (Black)	2086361

Note: Should be ordered separately if needed. Compatible with the SM-LUX II model.



► Desk Fastening Component



Order Code: **3048968**

Note: Should be ordered separately if needed. Compatible with the SM-LUX I model.



► Angled Desk Connection Component



Description	Order Code
SM-DEC 2 Desk Connection Kit (Anodized)	2147098
SM-DEC 2 Desk Connection Kit (Smoke)	2147099
SM-DEC 2 Desk Connection Kit (Black)	2147100

Note: Should be ordered separately if needed. Compatible with the SM-DEC II model.



E-LINE SMART

►► SM-FLEX SPINE TRAY and ORDER CODES



SM-FLEX Spine Tray		
Description	Product Order Code	
	Gray	Smoke
SM-FLEX Spine Tray Cable Organizer	5000363	5001022

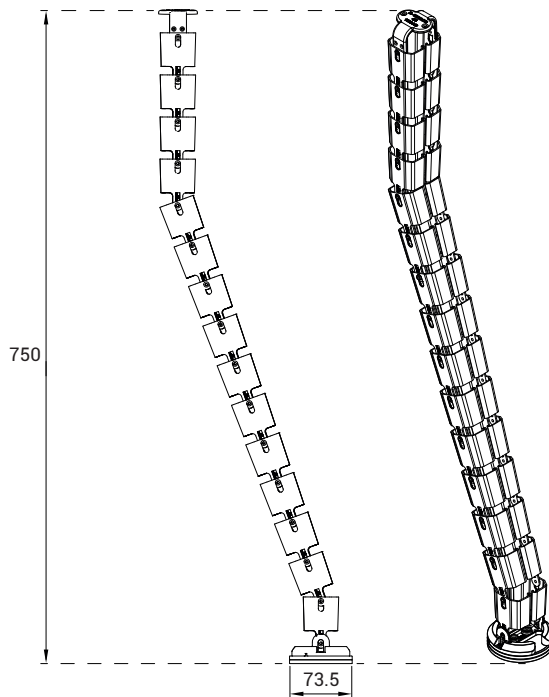
- For routing power, low-voltage, and multimedia cables from the floor to desks or workspaces;
- Flexible and aesthetic solution
- PC/ABS material, V2 (Flame Retardant Class), HF (Halogen Free) feature manufactured with PC/ABS material
- Standard Size = 750 mm



(Gray)



(Smoke)



■ Dimensions are mm

E-LINE SMART

►► DUAL USB CHARGING DEVICE

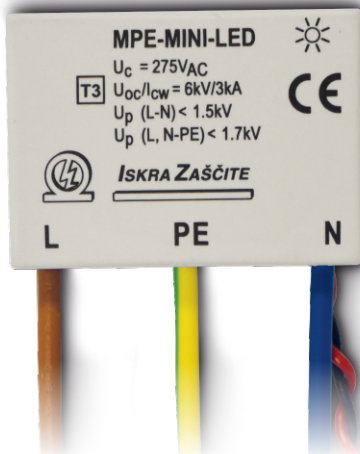


Maximum Continuous Operating Voltage.....	: 220-230 V, 50/60 Hz.
Output current value.....	: The total for both ports is 2.1 A
Output voltage value.....	: 5V DC
Maximum operating temperature.....	: 125 °C (Test results are documented with test reports.)
Dimensions.....	: 45x22x43,5 mm
Weight.....	: 32gr
Colour.....	: White/Black
Product Casing.....	: Polycarbonate (PC), Glow-wire 600 °C

►► OVER VOLTAGE PROTECTION DEVICE (SPD "Surge Protection Device")

Compact Multi-Pole SPD

MPE Mini & MPE Mini LED Class III • TYPE 3



Place of Use :	: Cable ducts and cable outlet
Network Systems:	: TN-S
Protection Mode:	: L-PE, L-N, N-PE
Fluctuation Degree:	: $U_{cc}/I_{cw} = 6kV/3kA$ $I_{max} = 3kV (8/20\mu s)$
IEC/EN Category:	: Class III / Type 3
Protective Elements:	: MOV and GDT
Safety:	: Indicator; LED
Casing:	: Compact design
Compliance:	: IEC 61643-11:2011 EN 61643-11:2012






Maximum Continuous Operating Voltage.....	: 275 V - 50/60 Hz
Voltage Protection Value (L, N-PE).....	: 1,7 kV
Voltage Protection Value(L-N).....	: 1,5 kV
Short-Circuit Current Protection Degree.....	: 1kA
Support Fuse.....	: MCB/B 16A
8/20µs Short Circuit Current Value.....	: 3kA
1.2/50µs Open Circuit Current Value Usage.....	: 6kV
Temperature Range.....	: -40°C/+85°C
Protection for Humidity Range in Operating.....	: %5 - %95
Environment Level.....	: IP20
Protection Technology.....	: "Metal Oxide Varistor" and "Gas Tube" are technological structures. They have a green LED indicator that shows the continuation of the protection life. When the protection life ends, the green LED indicator turns off.

Enclosure..... : Aluminum cover underneath with Akulon Ultraflow K-FKG S6 (PA 6) plastic protection, having UL-94 V0 Flame Retardancy Grade





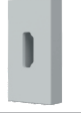

Certificates and Standards..... : CE
IEC 61643-11:2011
EN 61643-11:2012










■ These products are not sold separately and are provided with the product upon request.

B - ACTIVE NETWORK PRODUCTS

Product Image	Module Quantity	Product Description	Order Code
	-	UTP Cat-6, RJ45 Keystone Jack, Data, White	1004334
		UTP Cat-6, RJ45 Keystone Jack, Data, Black	1053869
	-	Cat-3, Rj11, 4 Contact, Keystone Jack, Telephone, White	1004337
		Cat-3, Rj11, 4 Contact, Keystone Jack, Telephone, Black	1053870
	1	HDMI Adapter, 22,5*45 mm Female-Female, 90 Degree, Screwed White	1016317
		HDMI Adapter, 22,5*45 mm Female-Female, 90 Degree, Screwed Black	1053871
	1	USB 3.0 Adapter, 22,5*45 mm Female-Female, 90 Degree, Screwed White	1016318
		USB 3.0 Adapter, 22,5*45 mm Female-Female, 90 Degree, Screwed Black	1053875
	1	VGA Adapter, 22,5*45 mm Female-Female, 90 Degree, Screwed White	1016319
		VGA Adapter, 22,5*45 mm Female-Female, 90 Degree, Screwed Black	1053876

C - PASSIVE NETWORK PRODUCTS

Product Image	Module Quantity	Product Description	Order Code
	1	Lux Model Faceplate, Spring Loaded, 22,5*45mm Transparent Cover Label Space, White	1004186
		Lux Model Faceplate, Spring Loaded, 22,5*45mm Transparent Cover Label Space, Black	1053855
	1	Blind Plastic Cover, 22,5*45mm, White	1004246
	2	Blind Plastic Cover, 45*45mm, White	1002612
	1	USB Faceplate, 22,5*45 mm, White	1016320
		USB Faceplate, 22,5*45 mm, Black	1053877
	1	HDMI Faceplate, 22,5*45 mm, White	1016321
		HDMI Faceplate, 22,5*45 mm, Black	1053879
	1	VGA Faceplate, 22,5*45 mm, White	1016322
		VGA Faceplate, 22,5*45 mm, Black	1053880

A - POWER OUTLETS			
Product Image	Module Quantity	Product Description	Order Code
	2	Modular Grounded Socket, German Standard 45x45 mm, 45° Degree, Child-Proof, White, Single	1023438
	4	Modular Grounded Socket, German Standard 45x45 mm, 45° Degree, Child-Proof, White, Double	1063258
	6	Modular Grounded Socket, German Standard 45x45 mm, 45° Degree, Child-Proof, White, Triple	1063260
	2	Modular Grounded Outlet (UPS), French Standard 45x45 mm, 45° Degree, Child-Proof, Red, Single	1023439
	4	Modular Grounded Outlet (UPS), French Standard 45x45 mm, 45° Degree, Child-Proof, Red, Double	1063261
	6	Modular Grounded Outlet (UPS), French Standard 45x45 mm, 45° Degree, Child-Proof, Red, Triple	1063263
	8	Modular Grounded Outlet (UPS), French Standard 45x45 mm, 45° Degree, Child-Proof, Red, Quadruple	2166332
	1	Dual USB Charger Adapter, 2 Ports, Input 100-240 VAC, 50-60 Hz, Output 5 VDC - 2100mA, 22,5x45 mm, White / Black	2080363
	1	Dual USB Charger Adapter, TYPE-A + C, Input 100-240 VAC, 50-60 Hz, Output 5 VDC - 2100mA, 22,5x45 mm, White	1046296

EQUIPPED OFFICE SOCKET BLOCKS

1. The body is made of aluminum material and painted with alternatives of Anodized or electrostatic powder coating system in smoke and black colors.
2. Side plastic covers are made of (PC/ABS) material, providing compliance with "halogen-free" and meeting the 960°C hot wire (glow wire) test conditions according to IEC 60965 standard, classified as "V2" flame resistance class according to UL94 standard.
3. Standard free-standing products can be fixed to the table with appropriate feet already attached when necessary.
4. Standard free-standing products can be screwed into the table inside and/or underneath through the screw holes on the side covers when necessary.
5. Recessed type products' covers are opened and closed with a push-lock (push-open - push-close) system, and the covers can be opened up to a maximum of 90° to prevent breakage. The cable entry and exit points of the cover are brush structured, and the brushes are made of PA6 material. When any type of plug or adapter is plugged into the sockets, the covers can easily close. The product is designed to be a maximum of 2mm above the table surface when the cover is closed.
6. The body of cylindrical type products is equipped with a push-open system and a braking mechanism to prevent it from falling down when the product is fully opened. With the plugs inserted, it can be placed into the slot inside the table thanks to the lift mechanism and spring-loaded cover structure, ensuring that only cables are visible on the table surface.
7. Standard products that can be fixed to the table are positioned at a certain angle for ease of use, and there is a movable cover plate on the back of the product that covers and protects the cable entry and exit points in a body-compliant manner.
8. The product contains terminal connection apparatus both inside and in a separate compartment, featuring screwless terminal blocks for each conductor with a push-in type connection. Additionally, this terminal apparatus is equipped with a cable compression clip to withstand pulling and tensile loads on the cables.
9. The connection of the power sockets mounted on the product is made with H07Z1-K type cable with a cross-section of 2.5 mm² or optionally 1.5 mm², and it is equipped with terminals capable of carrying at least 16A load for screwless push-in type connections, separately for UPS and Mains circuits.
10. The grounding contact screw and grounding terminal, fixed to the Aluminum body of the product, are connected with H07Z1-K type cable with a cross-section of 2.5 mm² to ensure body protection.
11. The socket mounting section is integrated with the body and designed to accommodate power sockets of any brand, as well as universal and modular type sockets, with dimensions of 45x45 mm (2 modules) for power sockets and 45x22.5 mm (1 module) for low-current and multimedia socket mounting.
12. The mains and UPS sockets are 250V AC, 16A, with a 45° angled design and a snap-in structure. The sockets used in the mains circuit are "white" in color and grounded according to the German standard, while the sockets used in the UPS circuit are "red" in color and grounded according to the French standard. Phase-neutral-earth bridges for 2-way, 3-way, and 4-way group socket systems are provided internally with brass bars.
13. For data cable connections, spring-loaded and labeled "face plates" suitable for Cat-6 UTP keystone jack structure are used.
14. For telephone cable connections, spring-loaded and labeled "face plates" suitable for Cat-3 keystone jack structure are used.
15. The socket mounting section is also designed to accommodate various standard and modular USB chargers, USB adapters, VGA adapters, HDMI adapters, etc. (45x45 and/or 45x22.5 mm), and it can be used with products of any brand.
16. Between the strong and weak current sockets inside the product, as well as after the last socket, blind covers compatible with the body of 45x22.5 mm (1 module) size are used before the termination cover.
17. For cable outlets on the desk, flexible and "halogen-free" cable organizer and protective plastic spine channels are used.

CE DECLARATION OF CONFORMITY

Product Group E-LINE SMART Modular Power Outlet Blocks
Manufacturer EAE Elektrik Asansor End. İnşaat San. ve Tic. A.S.
Akcaburgaz Mahallesi, 3114. Sokak,
No:10, 34522 Esenyurt - İstanbul

We confirm the compliance of the product or product group specified above, which is produced in EAE Facilities, with the standards and regulations listed below.

Standard:

IEC 60670-1

Boxes and enclosures for electrical accessories for household and similar fixed electrical installations - Part 1: General requirements

CE - Directive:

Low Voltage Directive 2014/35/EU

Technical Documentation Preparation Authority

EAE Elektrik Asansor End. İnşaat San. ve Tic. A.S.
Akcaburgaz Mahallesi, 3114. Sokak, No:10, 34522 Esenyurt - İstanbul

Emre GURLEYEN

Date

08/03/2023

Document Signing Authority

Elif Gamze KAYA OK
Deputy General Manager



Zertifikat

Certificate



Zertifikat Nr. Certificate No.
R 60169731

Blatt Sheet
0001

Ihr Zeichen Client Reference

Unser Zeichen Our Reference

Ausstellungsdatum

Date of Issue

0001-I.Ü.-TR23MV7U 001

03.08.2023

(day/mo/yr)

Genehmigungsinhaber License Holder

EAE ELEKTRİK ASANSÖR END.İNŞAAT SAN.
VE TİC.A.Ş.
Makine İhtisas Organize Sanayi
Bölgesi 6.cadde No:6 Demirciler Köyü
41455 Kocaeli
Türkiye

Fertigungsstätte Manufacturing Plant

EAE ELEKTRİK ASANSÖR END.İNŞAAT SAN.
VE TİC.A.Ş.
Makine İhtisas Organize Sanayi
Bölgesi 6.cadde No:6 Demirciler Köyü
41455 Kocaeli
Türkiye

Prüfzeichen Test Mark



Type Approved
Safety
Regular Production
Surveillance

www.tuv.com
ID 1111267823

Geprüft nach Tested acc. to

IEC 60670-1:2015

Zertifiziertes Produkt (Geräteidentifikation)

Certified Product (Product Identification)

Lizenzentgelte - Einheit

License Fee - Unit

Connecting box without fixing (Empty boxes for electrical accessories-
Flush Type)

Type Designation: SM-A-CDE 5
A: IN1, DEC5 1
C: F, G, S 1
D: 06M, 07M, 08M, 09M, 10M, 11M, 12M, 13M 1
14M, 15M, 16M, 17M, 18M, 19M, 20M
E: 1, 2, 3, 4, 5, 6, 7, 8, 9, 10, 11, 12, 13, 14, 15, 16 1
17, 18, 19, 20, 21, 22, 23, 24

Trademark: EAE

See test report for further details
This certificate replaces R 60157750 0001.

9

Dem Zertifikat liegt unsere Prüf- und Zertifizierungsordnung zugrunde und es bestätigt die Konformität des Produktes mit den oben genannten Standards und Prüfgrundlagen. Zusätzliche Anforderungen in Ländern, in denen das Produkt in Verkehr gebracht werden soll, müssen zusätzlich betrachtet werden. Die Herstellung des zertifizierten Produktes wird überwacht.
This certificate is based on our Testing and Certification Regulation and states the conformity of the product with the standards and testing requirements as indicated above. Any additional requirements in countries where the product is going to be marketed have to be considered additionally. The manufacturing of the certified product is subject to surveillance.

TÜV Rheinland LGA Products GmbH, Tillystraße 2, 90431 Nürnberg

http://www.tuv.com/safety E-mail: markcheck@tuv.com
Fax: +49 221 806-3935



Zertifizierungsstelle

Paulus Hou


Zertifikat

Certificate



Zertifikat Nr. Certificate No. R 60169751	Blatt Sheet 0001		
Ihr Zeichen Client Reference	Unser Zeichen Our Reference	Ausstellungsdatum Date of Issue	Date of Issue
	0001-I.Ü.-TR233YJ3 001	03.08.2023	(day/mo/yr)

Genehmigungsinhaber License Holder	Fertigungsstätte Manufacturing Plant
EAE ELEKTRİK ASANSÖR END.İNŞAAT SAN. VE TİC.A.Ş. Makine İhtisas Organize Sanayi Bölgesi 6.cadde No:6 Demirciler Köyü 41455 Kocaeli Türkiye	EAE ELEKTRİK ASANSÖR END.İNŞAAT SAN. VE TİC.A.Ş. Makine İhtisas Organize Sanayi Bölgesi 6.cadde No:6 Demirciler Köyü 41455 Kocaeli Türkiye

Prüfzeichen Test Mark	Geprüft nach Tested acc. to
 <p>Type Approved Safety Regular Production Surveillance www.tuv.com ID 1111267868</p>	IEC 60670-1:2015

Zertifiziertes Produkt (Geräteidentifikation) Certified Product (Product Identification)	Lizenzentgelte - Einheit License Fee - Unit
---	--

Connecting box without fixing (Empty boxes for electrical accessories-Surface Type)


Type Designation:	SM-A-CDE	5
A:	STD1, STD2, LUX1, LUX2, STDB DEC1, DEC2 DEC6, DEC7	1
C:	F, G, S	1
D:	06M, 07M, 08M, 09M, 10M, 11M, 12M, 13M, 14M 15M, 16M, 17M, 18M, 19M, 20M	1
E:	1, 2, 3, 4, 5, 6, 7, 8, 9, 10, 11, 12, 13, 14, 15 16, 17, 18, 19, 20, 21, 22, 23, 24	1

Trademark: EAE
See test report for further details.
This certificate replaces R 60157751 0001.

Dem Zertifikat liegt unsere Prüf- und Zertifizierungsordnung zugrunde und es bestätigt die Konformität des Produktes mit den oben genannten Standards und Prüfgrundlagen. Zusätzliche Anforderungen in Ländern, in denen das Produkt in Verkehr gebracht werden soll, müssen zusätzlich betrachtet werden. Die Herstellung des zertifizierten Produktes wird überwacht. This certificate is based on our Testing and Certification Regulation and states the conformity of the product with the standards and testing requirements as indicated above. Any additional requirements in countries where the product is going to be marketed have to be considered additionally. The manufacturing of the certified product is subject to surveillance.



Zertifizierungsstelle


Paulus Hou

TÜV Rheinland LGA Products GmbH, Tillystraße 2, 90431 Nürnberg
http://www.tuv.com/safety E-mail: markcheck@tuv.com
Fax: +49 221 806-3935

PRODUCT TYPES

BUSBAR ENERGY DISTRIBUTION SYSTEMS



CABLE TRAYS



TROLLEY BUSBAR ENERGY DISTRIBUTION SYSTEMS



INDOOR SOLUTIONS



SUPPORT SYSTEMS



EAE Elektrik A.S.
Head Office
Akcaburgaz Mahallesi,
3114. Sokak, No:10 34522
Esenyurt - Istanbul - TURKEY
Tel: +90 (212) 866 20 00
Fax: +90 (212) 886 24 20

EAE DL 3 Factory
Busbar
Gebze IV Istanbul Makine ve Sanayicileri
Organize Bolgesi, 6. Cadde,
No: 6 41455 Demirciler Koyu,
Dilovası - Kocaeli - TURKEY
Tel: +90 (262) 999 05 55
Fax: +90 (262) 502 05 69

Please visit our website for the updated version of our catalogues.
www.eaeelectric.com



Catalogue 31-EN / Rev 05 1000 pcs 12/03/2024
S.S.

We reserve the right to make changes in the values given in the catalogue.

